

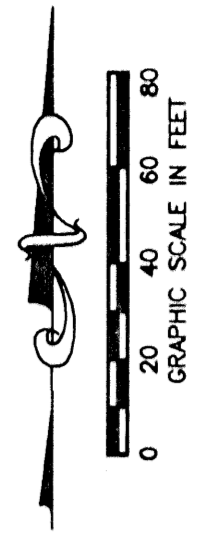
# WINSTON TRAILS PARCEL TWENTY

PART OF WINSTON TRAILS P.U.D.  
BEING A REPLAT OF TRACT G,  
"WINSTON TRAILS EAST"  
(PB 85, PGS 74 - 78)  
SITUATE IN SECTION 2, TOWNSHIP 45 SOUTH, RANGE 42 EAST  
PALM BEACH COUNTY, FLORIDA  
NOVEMBER, 1999 SHEET 5 OF 6

0587-030

# 114

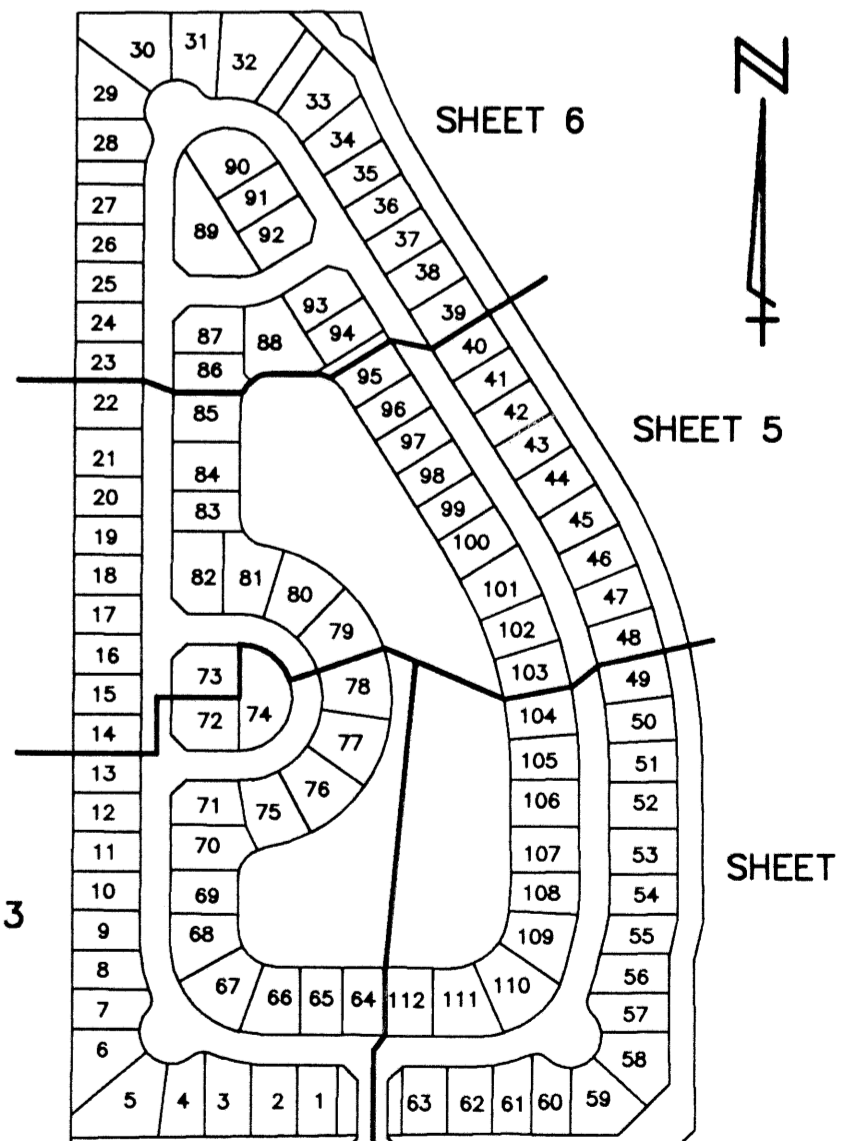
STATE OF FLORIDA  
COUNTY OF PALM BEACH  
THIS PLAT WAS FILED FOR  
RECORD \_\_\_\_\_ DAY OF \_\_\_\_\_  
AD, 2000 AND DULY RECORDED  
IN PLAT BOOK \_\_\_\_\_ ON PAGES  
\_\_\_\_\_ AND \_\_\_\_\_  
DOROTHY H. WILKEN, CLERK  
BY: \_\_\_\_\_, D.C.



CIRCUIT COURT SEAL

- NOTES:
1. THE COORDINATES SHOWN HEREON ARE STATE PLANE GRID COORDINATES ACCORDING TO THE TRANSVERSE MERCATOR PROJECTION OF THE FLORIDA EAST ZONE, N.A.D. 83, PER THE 1990 ADJUSTMENT.
  2. THE LINEAR DIMENSIONS SHOWN HEREON ARE GROUND DISTANCES IN U.S. FEET AND DECIMAL PARTS THEREOF.
  3. THE GROUND DISTANCE TO GRID DISTANCE SCALE FACTOR IS 1.000337 (GROUND DISTANCE X SCALE FACTOR = GRID DISTANCE).

- LEGEND
- L ARC LENGTH
  - AE ACCESS EASEMENT
  - BE BUFFER EASEMENT
  - Δ CENTRAL (DELTA) ANGLE
  - CH CHORD
  - DE DRAINAGE EASEMENT
  - FPL FLORIDA POWER & LIGHT
  - LAE LIMITED ACCESS EASEMENT
  - LME LAKE MAINTENANCE EASEMENT
  - LMAE LAKE MAINTENANCE ACCESS EASEMENT
  - LWDD LAKE WORTH DRAINAGE DISTRICT
  - (NR) NON-RADIAL
  - ORB OFFICIAL RECORD BOOK
  - PB PLAT BOOK
  - PG(S) PAGE(S)
  - PUD PLANNED UNIT OF DEVELOPMENT
  - R RADIUS
  - RAD RADIAL
  - (TYP) TYPICAL
  - UTILITY UTILITY EASEMENT
  - PERMANENT REFERENCE MONUMENT FOUND LB-048
  - PERMANENT REFERENCE MONUMENT SET LB-048
  - PERMANENT CONTROL POINT SET LB-048
  - CENTERLINE



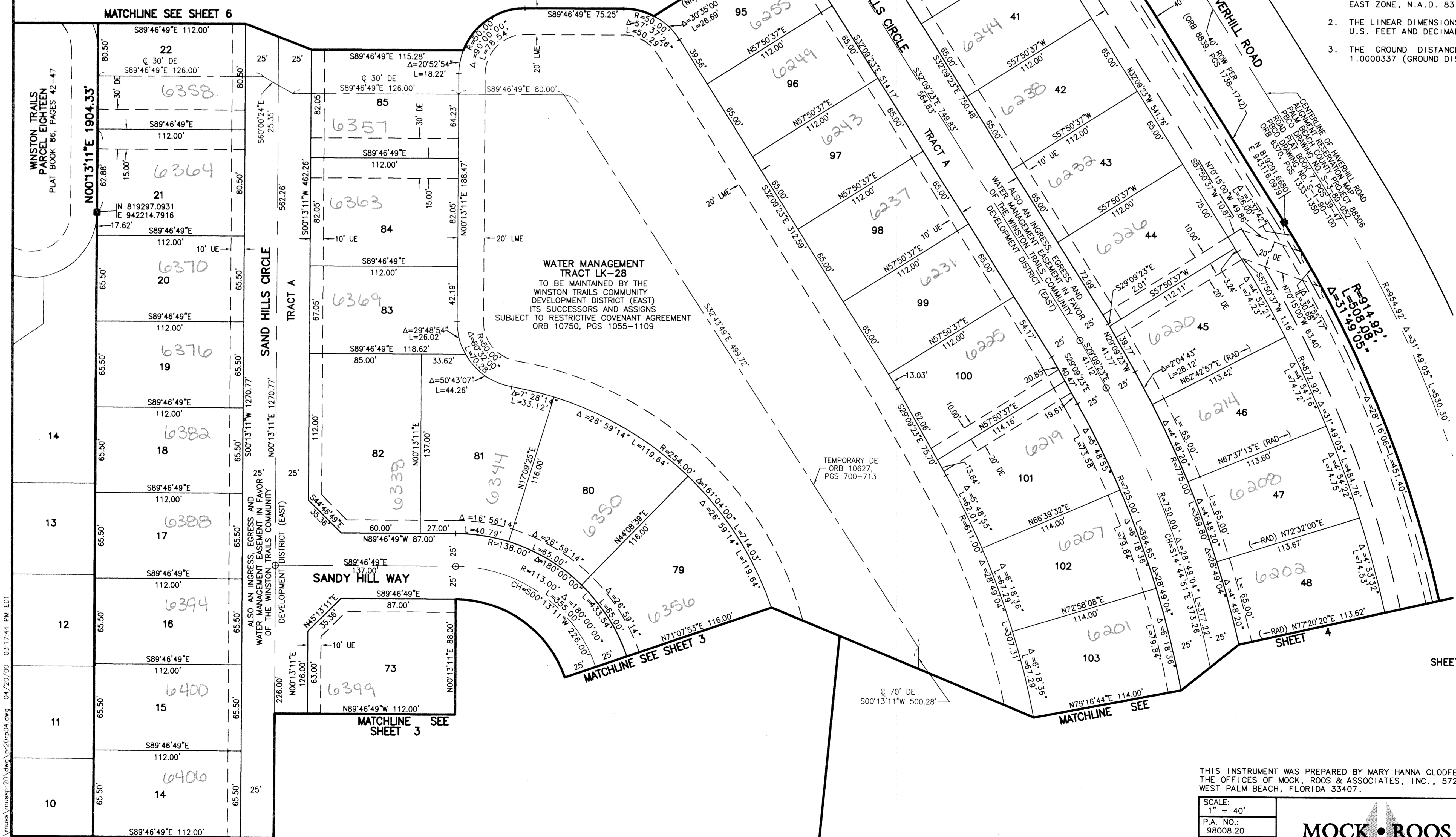
SHEET LOCATION MAP  
NOT TO SCALE

THIS INSTRUMENT WAS PREPARED BY MARY HANNA CLODFELTER, P.S.M. IN THE OFFICES OF MOCK, ROOS & ASSOCIATES, INC., 5720 CORPORATE WAY, WEST PALM BEACH, FLORIDA 33407.

SCALE:  
1" = 40'  
P.A. NO.:  
98008.20  
DATE:  
NOVEMBER 1999  
DRAWING NO.:  
45-42-02-137

**MOCK • ROOS**  
ENGINEERS • SURVEYORS • PLANNERS  
5720 Corporate Way, West Palm Beach, Florida 33407  
(561) 663-3113, fax 478-7248

WINSTON TRAILS  
PARCEL TWENTY  
PART OF WINSTON TRAILS P.U.D.  
BEING A REPLAT OF TRACT G,  
"WINSTON TRAILS EAST"  
(PB 85, PGS 74 - 78)  
SECTION 2, TOWNSHIP 45 SOUTH, RANGE 42 EAST  
PALM BEACH COUNTY, FLORIDA



REVISIONS  
NO. DATE BY  
1 04/20/00 MHS/PR20

REV.: 04-19-00  
CAD FILE:  
MUSSPR20/PR20RPO4

WINSTON TRAILS  
PAGE 114  
PROJECT MAP # 1756  
ZONING DISTRICT  
QUAD # 24  
AZ 430  
PUD NAME